



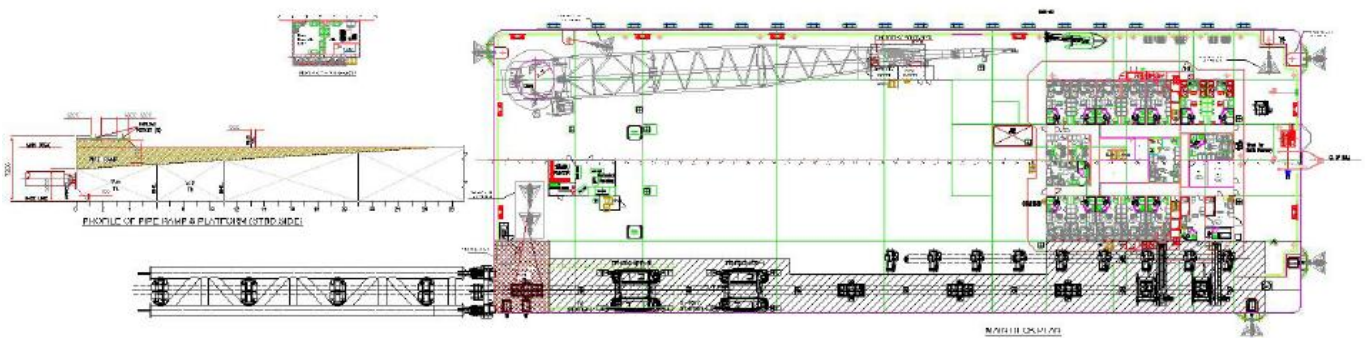
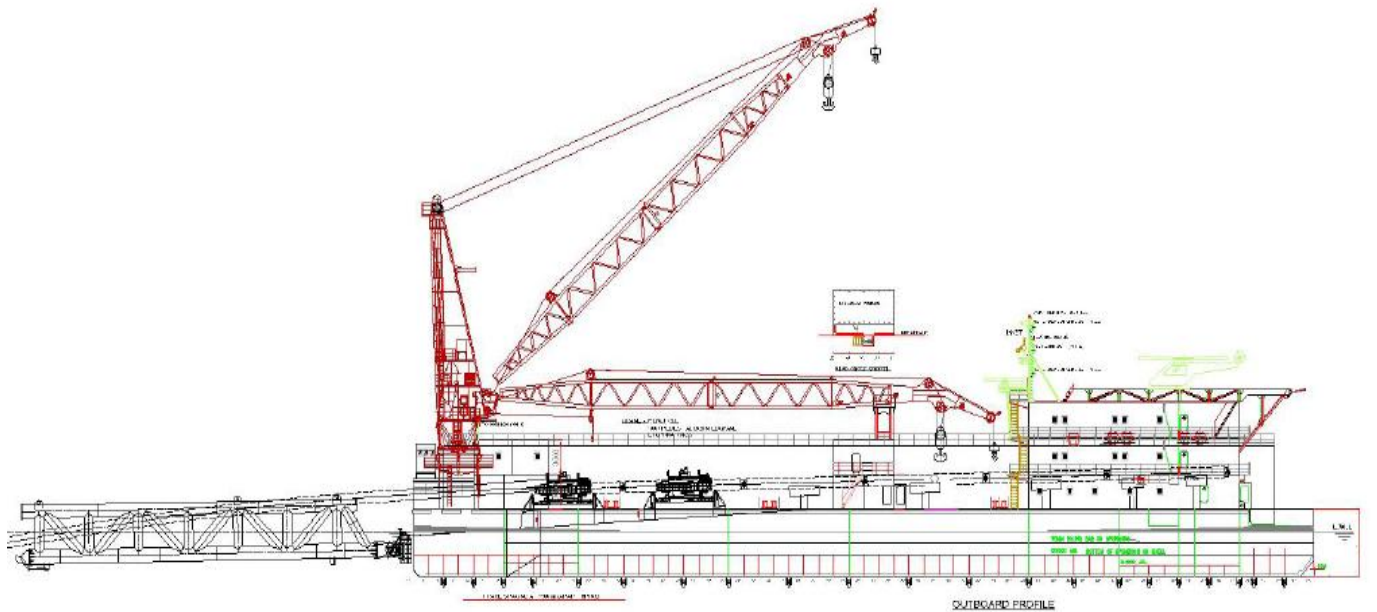
MARIDIVE CONSTRUCTOR

90 M PIPE LAYING BARGE

ISO
CERTIFICATE
QS-738HH



- Name of Vessel : **MARIDIVE CONSTRUCTOR**
- Type : Pipe Laying / Construction / Crane Barge.
- Owner : Maridive Offshore Projects.
- Year Built : 2008
- Flag : BELIZE.
- Port of registry : BELIZE
- Builder : ABG shipyard LTD – India



Barge Main Dimensions

Length overall : 89.90 m
Width overall : 31.50 m
Depth : 6.00 m
Draught:
Max : 4.00 m
Min : 1.8 m

Deck Cargo: 4000 Ton.
Total cargo: 5000 Ton.
Deck Loading: 12 Ton/m²
Open Deck Area: 1600 m²
Gross Tonnage: 5336
Net Tonnage: 1600

Pipe Laying Equipments

- Manufacturer & Supplier : SAS – Gouda BV
- Pipe Diameters : 4”(102 mm) – 60”(1524 mm)
- Length Pipe Joint Maximum : 40 ft (12.2 m)
- Weight Pipe Joint maximum : 30 t
- Operating Temperature (MD : +5 To +45), (BMD : +5 To +35)

Pipe Tensioning Equipments PTE

Horizontal Tensioner (2 No.72 t / each)

Integrated Hydraulic Power Unit in each tensioner
Integrated Local Control Console Unit in each tensioner

Pull Load 60 t

Pay in 16m/min, Pay out 20 m/min

BOP : 1600

Dimension : L.10015 x W.5370 x H.4400

A & R Winch (23.5 t)

Integrated Local Control Console Unit in each tensioner

Maximum Load 120 t

Pay in 16m/min, Pay out 20 m/min @ middle layer

Drum Capacity 700m x 7 Layers x Dia. 64 mm RH

Dimension : L.4300 x W.4100 x H.2700

Drum Dimension : L.1600 x D.1020 x H.2040

Measuring Sheave (2.95 t)

120 t, horizontal

Measure Tension, Displacement & Speed

Dimension : L.1650 x W.1650 x H.747

Vertical Pipe Support, Bead Stall PS-BS (4 No., 995kg)

Dimension. L.940 x W.550 x H.1650 – 1900 mm

Hold Down Device (1 No., 301t)

Dimension L.2370 x W.2634 x H.4160 mm

Electric Power Unit EPU

RCC “Remote Control Console” (225 kg)

Dimension : H.1400 x W.1200 x D.950

RIP “Remote Information Panel” (15 kg)

Dimension : H.200 x W.400 x D.120

Pipe Handling Equipments PHE

Longitudinal Conveyors, Fixed Electric Driven LC-FD (9 No., 1843 Kg)

Pipe Speed 15 m/min

BOP : 1700 mm

Transverse Vehicles TV + TV Rail System (2 No.,1840 Kg)

Traveling Speed 25 m/min

BOP : 1700 mm

Length Transfer Station : 6850 mm

Over shoot distance 500 mm

Traveling distance nominal : 3500 mm

Line Up Tools LUT (Line Up Station) (2 No., 6900 kg)

Allow motion in X, Y, Z directions & spinning

Nominal Pipe Speed 25 m/min

BOP : 1713 mm

Movement Y-Axis : +/- 225 mm

Movement Z-Axis : + 214 / - 236 mm (from POP)

Vertical Pipe Support, Bead Stall PS-BS (995 kg)

Dimension. 940 x 550 x 1650 – 1900 mm

Pipe Support Roller Ramp PS-RR (3 No., 5455 kg)

BOP : 1532 mm – 1700 mm

Pipe Support Roller, Stern PS-RS (8595 kg)

BOP : 1000 – 2100 mm

Hydraulic Power Unit HPU

80 Kw, 380 V, 50 Hz, 160 A

1000 VA, 230 V, 50 Hz, 10 A

Dimensions : 2000 x 1650 x 1570

Electric Power Unit EPU (1000 kg)

80 Kw, 380 V, 50 Hz, 125 A

1000 VA, 230 V, 50 Hz, 10 A

To be installed in an air conditioned area BMD

Dimensions h.2270xW.2000xD.600

Brake Resistor

Dimensions h.1899xW.3000xD.1400

Local Control Console LCC (175 kg)

Dimensions h.470 x W.930 x D.540

MAIN CRANE

Crane Type: KENZ Pedestal Mounted Crane
EHC 300/4500 O.S.

Boom Length : 51.5 m

Lifting Capacity :

- Main Hoist: 300t @11m, 49.5t @ 51.5m
- Whip Hoist: 30t @ 53.5 m
- Tugger: 0 – 10t

Mooring System

The barge mooring system is monitored with CCTV system including one (1) camera for each Winch in each winch room, one camera for each Winch at wire outlet (Total 16 Camera for 8 Winches), Two (2) cameras for Barge Fwd and two (2) mobile cameras on Barge Deck.

All Cameras are connected to TV LCD monitors in the Control room.

Mooring Winches (PLIMSOLL)

The Barge is equipped with eight (8) electro-hydraulic single drum anchor winches, controlled from the control room and locally.

Pulling is about 50 ton at 10 m/min

Each winch is equipped with a tension and length meter.

The barge is equipped with eight (8) anchors each of (8) tones and (8) galvanized wire cables of 48 mm Dia & 1500 m length each.

Parking Anchor Windlass (PLIMSOLL)

One (1) parking anchor (2850 kg) with chain cable (48mm Dia)

One (1) spare parking anchor (2850 kg).

Duty Pull Rate 10 Ton @10m/min

LIFE SAVING APPLIANCES

Two hundred fifty (325) SOLAS approved Life jackets.

Sixteen (20) life rafts each of 25 person's capacity.

Thirty (30) ring buoys with electric water light and whistle.

Two (2) canvas covered stretchers.

Two (2) industrial first aid kits.

Four (4) fire blankets.

One (1) standard 4- men personal basket

Twelve (12) breathing apparatus packs

One (1) six (6) men 30 HP inboard diesel driven motor rescue boat with davit

BARGE TANKS CAPACITIES

Diesel fuel (4 tanks) : 570 Ton

Water Ballast (15 tanks) : 2400 Ton

Fresh water (6 Tanks) : 1500 Ton

Potable Water (2 Tanks) : 500 Ton

Hydraulic Oil (1 Tank) : 7.8 Ton

Lubrication Oil (1 Tank) : 15.0 Ton

BARGE PUMPING CAPACITIES

Diesel fuel

Two (2) Transfer Pumps of 12 m³/hour @40 m

One (1) Transfer hand Pump for emergency use.

One (1) Discharge pump of 100 m³/hour @ 60 m

Water

Drinking water: 100 m³/hr @ 60 m

Industrial water: 130 m³/hr @ 60 m

ACCOMMODATION FACILITIES

The barge is equipped to provide accommodation for 250 personnel with galley, recreation rooms, hospital, and offices.

HOSPITAL

Hospital is equipped with Medical equipment, accommodation for medics and a bed for patient's observation.

HELIDECK

Helideck is provided raised above the Deck Superstructure

Suitable for a Bell 214 or equivalent Helicopter

FIRE FIGHTING EQUIPMENTS

All Fire Fighting Equipment (type, number...etc) as per SOLAS regulations.

COMMUNICATION

Communication system with SSB, VHF, Hand held Radios, PA System & EPIRB etc.

MACHINERY SPECIFICATIONS

1. ELECTRICAL EQUIPMENTS

- Three (5) CAT Generators Model 3508
Power 856 Kw @ 1500 RPM, 50 Hz
- One (1) CAT emergency Generator Model
3406 with 240 Kw @ 1500 RPM, 50 Hz
- FOUR (4) Battery Chargers

2. PUMPS & PRESSURE SETS SPECIFICATIONS

2.1: Bilge, Ballast & Fire Main Pump

- Three (3) identical self priming Pumps of
130m³/hr@60m
- One (1) Bilge Pump 20m³/hr

2.2: Emergency Fire Pump

- One (1) diesel operated driven Pump of
60m³/hr@60m

2.3: Fuel Oil Pumps

- Two (2) Fuel Oil Transfer Pumps of 12m³/hr@40m
- One (1) Emergency Fuel Oil Hand Pimp
- One (1) Fuel Oil Discharge Pump of
100m³/hr@60m

2.4: Fresh Water Pumps & Hydrophore

- One (1) fresh Water Transfer Pump of
100m³/hr@60m
- Two (3) Fresh water Pressure Pumps of
10m³/hr@40m
- Two (3) FW Hydrophore Tanks 750liter@6bar
- One (1) Potable Water Pressure Pump of
2.2m³/hr@30m
- One (1) PW Hydrophore Tanks 200liter@6bar

2.5: Sea Water Pumps & Hydrophore

- One (2) Sea Water Pressure Pump of
10m³/hr@40m
- One (2) SW Hydrophore Tanks 750liter@6bar

2.6: AC Sea Water Cooling Pumps

- One (1) AC1 cooling Pump of 120m³/hr@20m
- One (1) AC2 cooling Pump of 80m³/hr@30m

2.7 Fresh Water Circulating Pumps for Mooring Winches

- Four (4) Fresh Water Circulating Pumps of
10m³/hr@40m

2.8 Sewage Transfer Pumps

- Two (3) Transfer Pumps of 80m³/hr@20m

2.9 Grey Water Transfer Pumps

- Two (2) Transfer Pumps of 10m³/hr@25m

2.10 Hot Water Transfer Pumps & Calorifier

- Two (3) Transfer Pumps of 5m³/hr@25m
- Two (3) 1000 liter Calorifier

2.11 Dirty Oil Pump

- One (2) Pumps of 4.9liter/min@25m

BARGE ANTI-POLLUTION EQUIPMENT

The Barge has an antipollution system, which includes:

- One (1) Oily Water Separator 15 ppm / 2 m³/hr.
- One (2) Sewage Treatment Plant (20.35 m³/day)
- One (1) Bilge transfer Pump (10m³/hr@40m) for the suction of oily Bilge from Machinery spaces to the Bilge holding Tank.

POTABLE WATER MAKERS

- Two (4) Reverse Osmosis with Ultra violet sterilizer, with a combined capacity 52.8T/day with a chlorine content less than 150PPM

AIR COMPRESSORS

- Two (2) Air Compressors 200 cfm Atlas Copco
- One (1) Air Compressors 500 cfm Atlas Copco

MARIDIVE OFFSHORE PROGETCS (S.A.E)

CAIRO

37, Cornish El Nil, Maadi
Tel: 23585204 (10 lines)
Fax: 23581160
Email: mop@moscairo.com

ALEXANDRIA

10 Ahmed Yehia St Gleem 21411
Tel: 5852899
Fax: 583 4668
Email: maridive@mosalex.com

PORT SAID

16 El Gomhoria St . 42311
Shaher Group Building
Tel: 334134 – 221771
Fax: 23 6436

ABU DHABI

Al Kheily Bldg, Office No. 2
Behind Regency Hotel
Tourist Club Area
Tel: 2-671 2205
Fax: 2 671 2767
Email:maridive@emirates.net.ae